



# WRU Hub Programme 3.0

Annual Report

2022 - 2023



# Hub 3.0 Visions, Aim & Objectives

## Vision

Enable Welsh Rugby to Thrive

## Aim

To connect and collaborate with key establishments to develop an inclusive and diverse pathway. In order to create ambitious, enterprising, ethical and healthy young people in line with the four purposes of the Curriculum for Wales.

## Objectives

Individual establishments will be target with agreed objectives across the 5 Ps of the WRU Rugby Strategy.

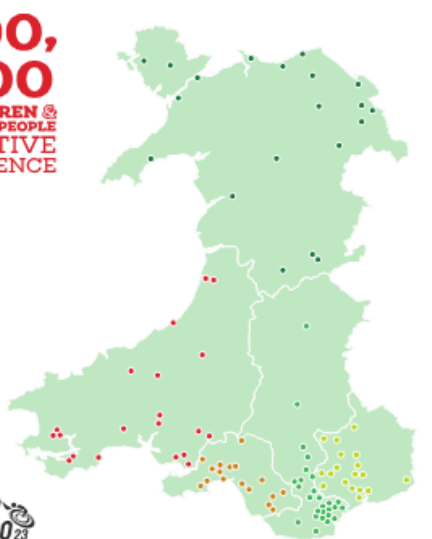
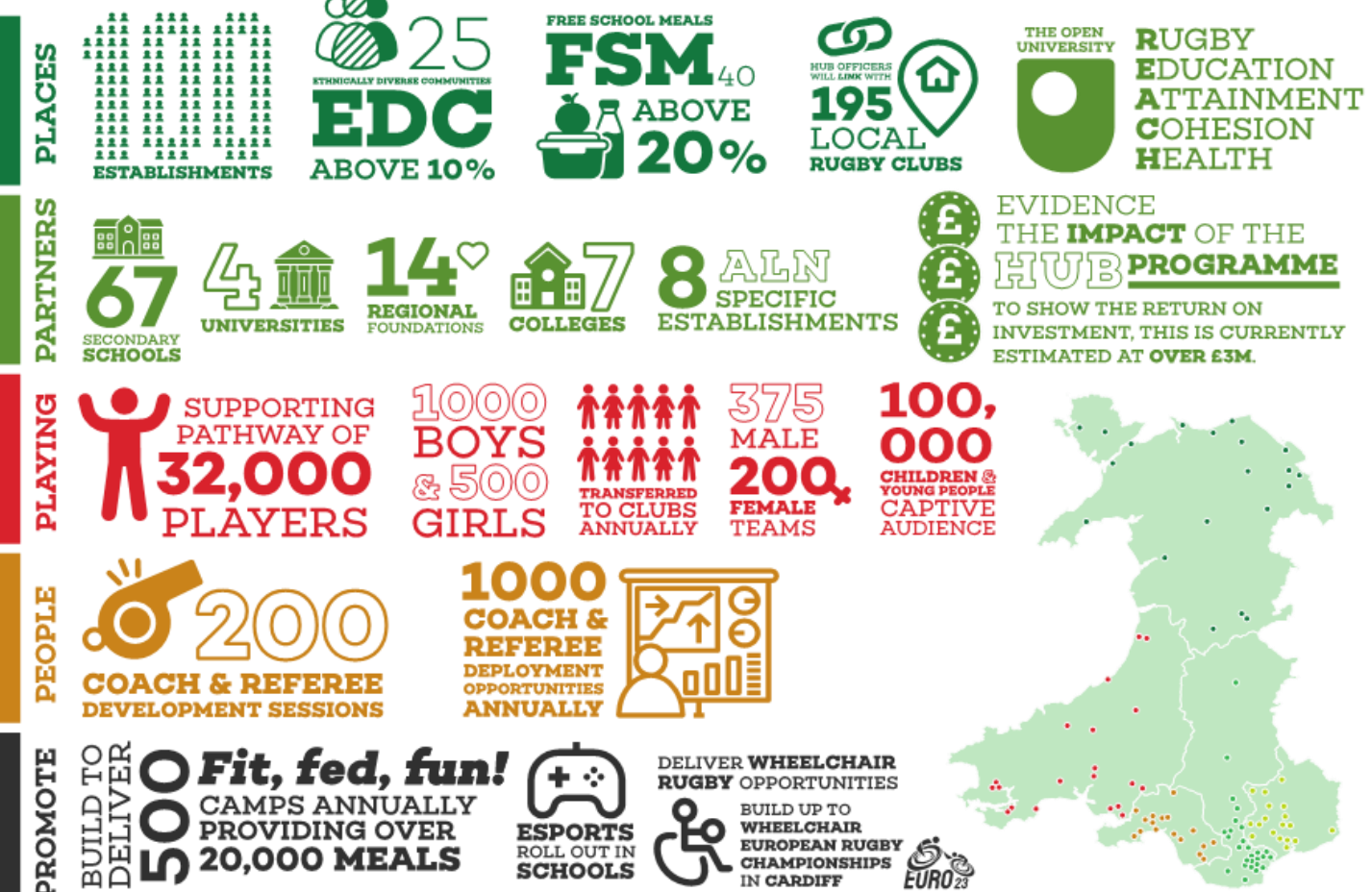
WRU Rugby Officers, and Coach Development Officers manage individual officers and establishments through a specific operational plan.



# Key Performance Indicators

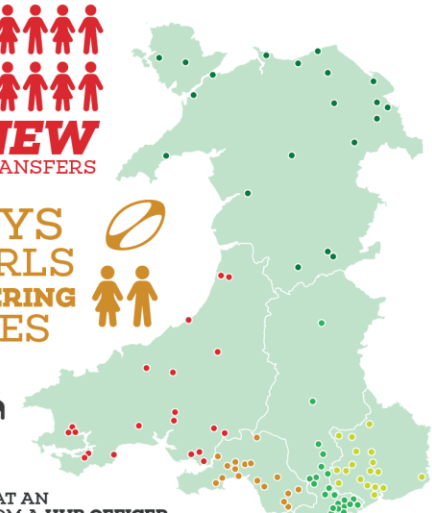
## Target 2022/23

### WRU HUB PROGRAMME 3.0 - KEY PERFORMANCE INDICATORS - 2022/23



## Actual 2022/23

### HUB PROGRAMME KPI GRAPHIC 2022/23







# Highlights & Challenges 2022/23

## People

**865** Individuals deployed as volunteers, coaches and referees

\*40% of coaches trained were deployed

\*25% of the workforce were girls

## Places (Community Engagement)

**11,000** engagements by hub officers across Clubs, Female Hubs, Inclusion teams and the player pathway

\*Average of 6 coaches attended each WRU CPDs

\*2112 boys transferred to clubs

\*989 girls transferred to female hubs

## Playing

**25,505** boys & **13,243** girls sessions across curricular, extra curricular and games/events

\*30% of the captive audience engage in rugby outside of the curriculum

## Promote

**6,350** sessions delivered or events supported by WRU Hub Officers

\*Includes data from 8 ALN specific establishments

\*Includes delivery and support of the Wheelchair Rugby Championships

## Partners

Hub Officers supported the delivery of **Fit Fed Fun** and WLGA Food & Fun Programmes

\*5 establishments engaged in The Open Uni evaluation

\*10 establishments participated in esports Cymru league



# The Open University

## 2023/23 Progress

The Open University visited 5 schools and spoke to Staff and pupils, in small focus groups discussed ideas about how we might evaluate the Hub programme.

We are still analysing these visits, but we do have certain emergent themes:

- We have no prescriptive intervention.
- We evaluate the impact of each hub officer in their particularly area and then theme the evaluation.
- We use a variety of questionnaires and/or apps to assess mood, activity, and diet.
- We use technology to track activity.

We hope to have this phase completed in September which will help us in our next steps.

## Next steps

- Complete the parental questionnaires in September 2023
- Apply for the OU Open Societal Challenges (OCS) programme to fund the testing stage of the project (pilot) for start in October.
- Over 6/8 months examine the tools and methods in 10 schools (5 original plus a further 5) to examine project feasibility
- Develop a protocol for submission to a grant call/ funding body.
- Submission for funding

This phase will conclude in Summer 2024.

We will need funding for the final stage looking at the impact in 25 schools, 5 per region in Wales using the develop methods and tools. This will run for 1 year, with 6 months for analysis and 6 months for writing up.

**Expected final reports will be produced in Summer 2026.**



# Objectives 2023/24

**\*Individual Officer KPIs may vary**

## People

Coaches, referees, and volunteers developed and deployed into the community

**\*Training 10 rugby leaders and 4 referees (Min. 5 girls)**

**\*Deploy 50% of leaders and referees**

## Places (Community Engagement)

Club, Female hub and Inclusive teams' engagement. Player pipeline support.

**\*50+ visits to WRU clubs, female hubs and inclusion teams**

**\*Support WRU Regional Coach Development Programme**

**\*Up to 25 sessions in the player pipelines system**

## Playing

The WRU Hub Programme is fundamental to grow and develop the game in communities of Wales so that individuals achieve their potential

**\*50:50 Delivery for boys and girls**

**\*Targeted primary school programmes**

## Promote

WRU Hub Programme will provide an inclusive offering for all our people and communities

**\*Support of FFF camps & WLGA food and fun programme**

**\*Delivery of sessions within specific ALN groups or establishments**

## Partners/Establishment

Growth of inclusive curricular/extra-curricular playing opportunities, primary schools' delivery

**\*2 establishments per region in The Open Uni evaluation**

**\*4 establishments to participate in esports Cymru league**

# Active Establishments

## 2023/24

### Scarlets (20)

Coleg Sir Gar  
Ysgol Dyffryn Aman  
Ysgol Maes y Gwendraeth  
Ysgol Gyfun Aberaeron  
Ysgol Heol Goffa  
Aberystwyth University  
Ysgol Harri Tudur  
Ysgol Bro Teifi  
Ysgol Gyfun Penweddig  
Ysgol Bro Pedr  
Haverfordwest High VC school  
Ysgol Gyfun Emlyn  
Scarlets Rugby (4)  
• Llanelli - East  
• Llanelli West  
• Carmarthen  
• Pembs  
Pembrokeshire College (2)  
• Ysgol Bro Gwaun  
Queen Elizabeth Carmarthen  
Dyffryn Taf

### Ospreys (15)

Maesteg School  
Dylan Thomas Community School  
Brynteg School  
St Joseph's Catholic School & Sixth Form Centre  
Ysgol Maesydderwen  
Pencoed Comprehensive School  
Ysgol Bae Baglan  
Ysgol Pen-y-Bryn  
University of Wales Trinity Saint David  
Ysgol Hendrefelin Special School  
Morrison Comprehensive School  
CCYD  
NPTC Group (South Campus)  
Bridgend College  
Cynfig Comp

### Dragons (17)

The John Frost School  
Brynmawr Foundation School  
Abertillery Learning Community  
Bassaleg school  
Tredegar Comprehensive School  
Risca Community Comprehensive School  
King Henry VIII School  
Newport LIVE  
Croesyceiliog School  
Newport High School  
West Monmouth School  
St Cenydd Community School  
Abersychan School  
Cwmbran High School  
Newbridge School  
Caerphilly County Borough Council (2)  
• Inclusion  
• Heol Ddu / Idris Davies

### Cardiff (25)

Eastern High  
Cardinal Newman Catholic School  
Ysgol Gyfun Gymraeg Glantaf  
Ysgol Garth Olwg  
The Bishop of Llandaff  
Afon Taf High School  
Ysgol Calon Cymru  
Ysgol Gymraeg Bro Morgannwg  
Cardiff West Community High School  
Coleg y Cymoedd  
Valleys Kids  
Pen Y Dre  
Cardiff High School  
Llanishen High School  
Mountain Ash Comprehensive School  
Cantonian High School  
Cardiff Met University (2)  
• Community  
• Campus  
Cardiff Rugby Community Foundation (6)  
• Inclusion  
• Rhondda  
• Cynon Valley  
• Powys  
• Pontypridd  
• Vale of Glamorgan  
Ysgol Gyfun Cwm Rhondda

### North Wales (21)

Ysgol Godre'r Berwyn  
Ysgol Emrys ap Iwan  
Deeside Community Trust  
Ponthafren  
Llanidloes High School  
Brynllwarch Hall School  
Ysgol y Creuddyn/ Ysgol y Gogarth  
Ysgol Brynhyfryd  
Ysgol Dinas Bran  
Ysgol Syr Hugh Owen  
Bangor Rugby Football Club Limited  
• Friars  
• Tyrfan\*  
Ysgol Bro Idris  
Dyffryn Conwy  
Llandrillo Menai  
Castell Alun High School  
Denbigh High School  
Ysgol Glan y Mor  
Wrexham Rugby Club  
Canolfan Addysg y Bont  
Ysgol Uwchradd Bodedern  
Dyffryn Ogwen  
Rhyl\*

\*Non WRU



# Departing Officers & Establishments

## Officers

### Cardiff

- Mac Williams
- Claudia Meyrick
- Harry Boxhall
- Ifan Davies
- Jack Smyth
- Ryan Maredith
- Ffinli Barber

### Ospreys

- Fraser Deer
- Josh Humphries
- Lewis Crabbe
- Tom Griffiths
- Chris Dicomidis
- Jac Hopkins
- Keiron Morris
- Jac Pope

### RGC

- Morgan Bagshaw

### Scarlets

- Gareth Potter

## Establishments

### Cardiff

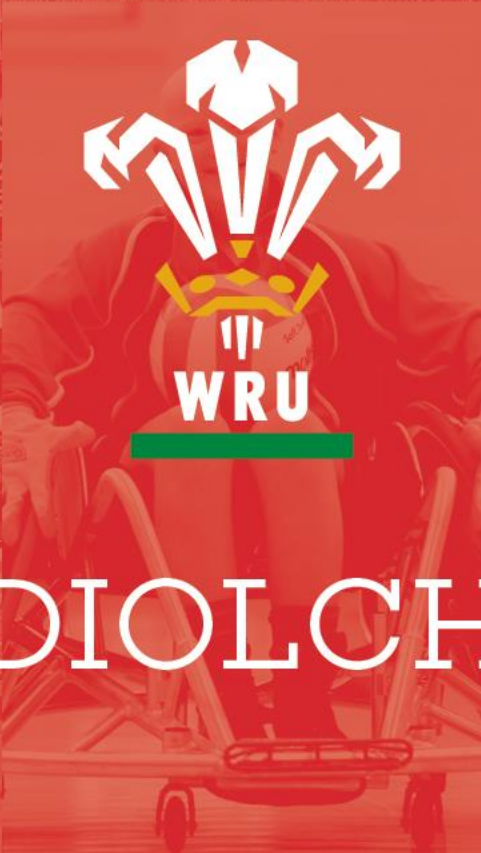
- Corpus Christi
- Radyr
- Plasmawr

### Ospreys

- Pontarddulais
- Bryntirion
- Bishopston

**Diolch to all the hub officers & establishments who are departing the programme in 2023**





DIOLCH