



Online Registration

**Players, Coaches, Referees,
First Aiders, Team Managers and
Club Operations Managers**



CONTENTS

| | |
|---|---|
| What is Online Registration? | 1 |
| Why Online Registration? | 2 |
| Online Registration Process Explained | 3 |
| Benefits of Online Registration | 4 |
| Player Online Registration | 5 |
| Coach Online Registration | 6 |
| Referee Online Registration | 7 |
| FAQ | 8 |

Online Registration is designed to support the vision of the WRU to achieve:

**More People, More Often, with More
Enjoyment and More Success.**

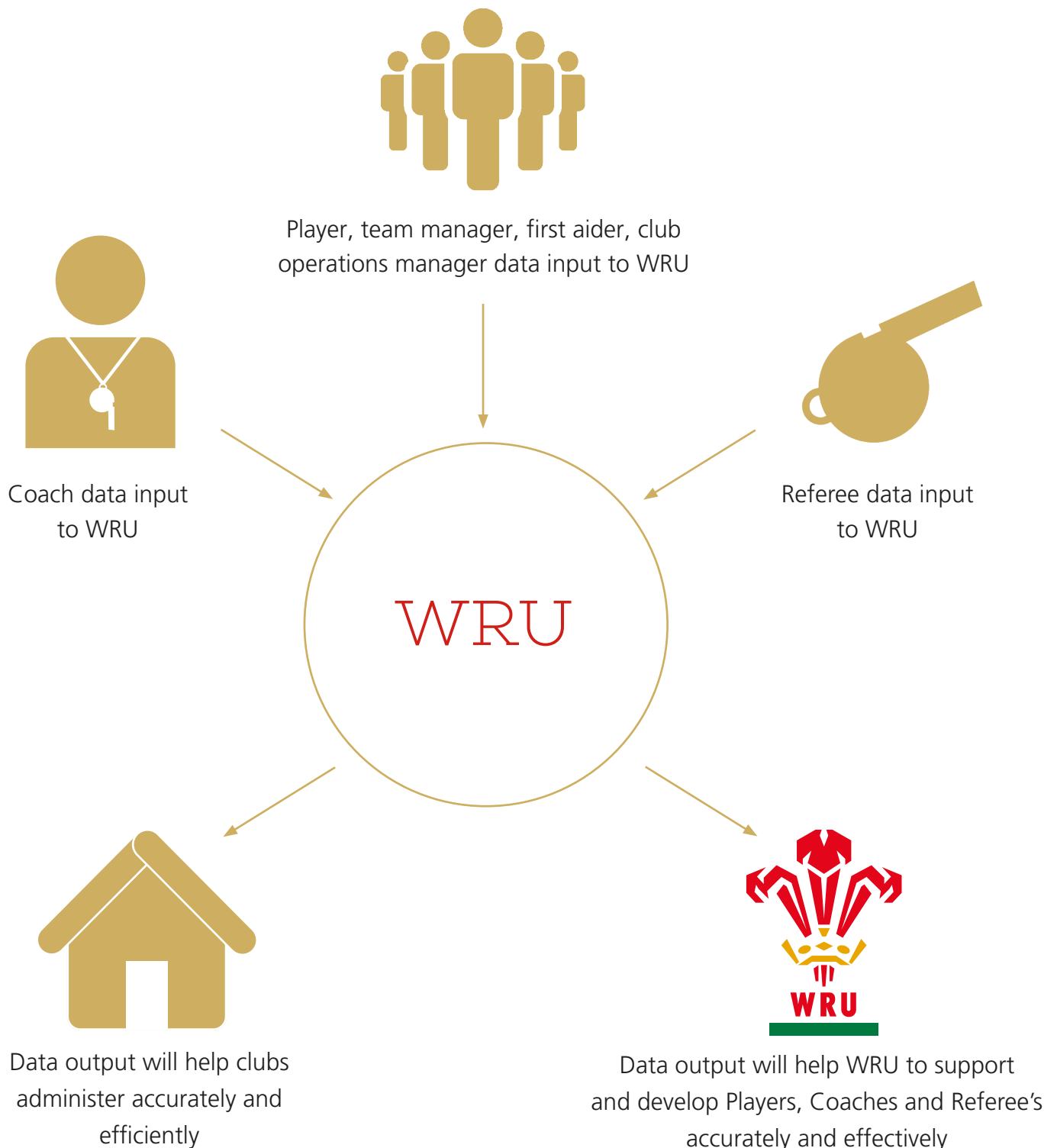
WHAT IS ONLINE REGISTRATION?

Online Registration is a process that each player, coach, referee, team manager, first aider and club operations manager in Wales, across all age groups, will undertake prior to the beginning of each new season.

WHY ONLINE REGISTRATION?

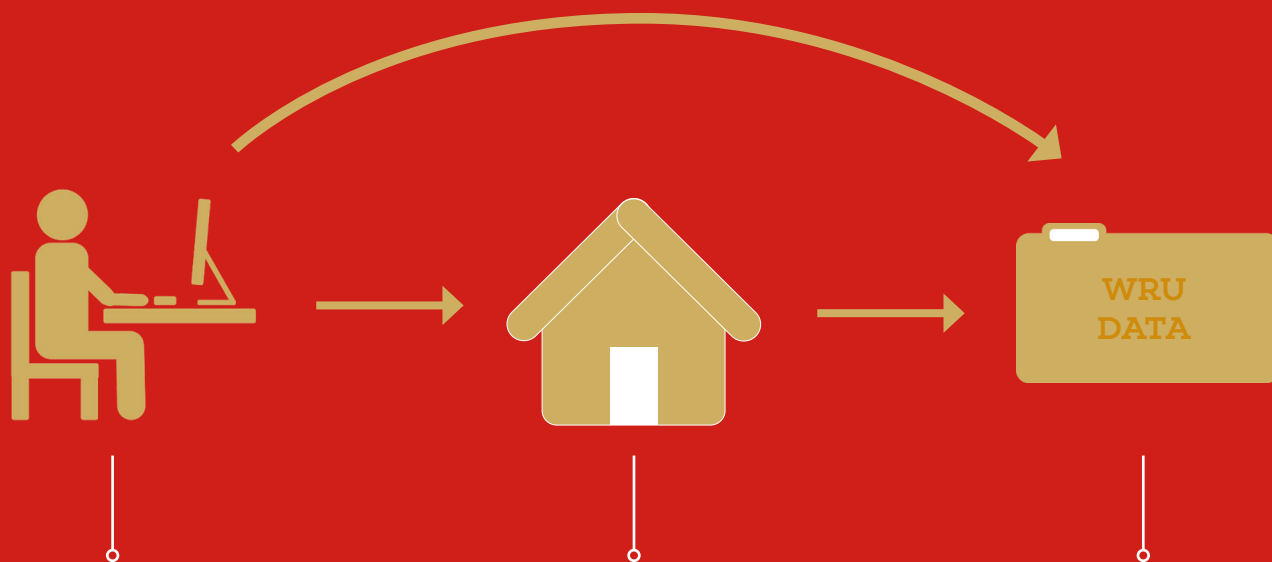
The WRU recognises the importance of digital platforms in our society and how the benefits of accurate real-time data can help us grow our game.

The diagram below highlights how accurate real-time data will help our game grow and streamline our practices and processes.



ONLINE REGISTRATION PROCESS EXPLAINED

Online registration is a simple process that each participant (parent or guardian will register on behalf of any player, coach or referee below the age of 18), will undertake during a given period in the year.



Step 1 - Registration

- A player (parent or guardian) will register on behalf of any player below the age of 18, coach, referee, team manager, first aider and club operations manager will register by visiting: wrugamelocker.wales
- The player, coach, referee, team manager, first aider and club operations manager will follow the step by step process of entering their personal details as part of the initial registration. The only requirement will be to update their personal details if anything changes.
- The participant will also input their rugby commitment(s) for the forthcoming season.
- Players will also be asked to enter the club that they are currently registered with from the previous season.

Step 2 - Club verification

- Once registration has been submitted their rugby commitment will be forwarded to the respective club.
- The club representative will verify the position.

Step 3 - WRU

- Following registration and verification by the club, the WRU database will successfully update.
- At this point, all who have successfully submitted their data will be in a position to participate in the forthcoming season.
- At this point participants will have the benefit of being insured under the terms communicated via the Club and/or WRU, and will potentially be offered additional benefits and offers.
- A step by step 'How To' guide will be available to all clubs online via **WRU Game Locker**.

PLEASE NOTE: Club player registrations do not expire under this system. It is assumed you will remain with the club nominated as part of your original registration unless you undertake the regulated transfer process that is in place.

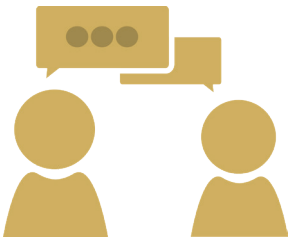
BENEFITS OF ONLINE REGISTRATION



Administration:

For club officials, online registration offers to lessen the administration workload by providing the opportunity for club secretaries, youth secretaries, junior secretaries and team managers to populate the audit throughout the season via myWRU for participants ahead of the end of season audit deadline. Verification via myWRU is a simple process designed to minimise the time spent on administration but maximise the potential of real time accurate data.

With accurate data, each club can access their active participant lists and manage the club in real time.



Communication:

Online registration provides the WRU with accurate data annually which, enables appropriate communication regarding development opportunities. The data will also provide valuable insight, through feedback, on all WRU initiatives in order to consistently ensure the best programmes are being delivered and appropriate resource investment to key areas which, will allow the WRU to maximise the effectiveness of the overarching strategy.

The WRU understands the importance of appropriate communication, delivering information and content that is relevant to the individual based on their current commitment in rugby.



Development:

In order to support and develop the pathway, access to real time data will allow WRU staff to provide the correct on the ground practices by delivering the best rugby experience for all participants to enjoy the game which, will ensure strong retention and recruitment.

“As a club we have been waiting for such a system for a long time, the benefits of accurate data will allow us to engage more effectively and efficiently”.

Barry RFC.

PLAYER ONLINE REGISTRATION

What does Player Online Registration mean?

Each year, every player in Wales (parent or guardian of the player if the player is under 18) will access the WRU Player Registration website www.wrugamelocker.wales and submit their Online Registration for the forthcoming season.

Online Registration, will ensure that each year the WRU and clubs will have accurate, real-time data on all active and inactive players throughout Wales. It will allow clubs to generate teams sheets more efficiently, auto populate sections of the audit and allow the WRU to support and develop all active and inactive players.

PLEASE NOTE: Club player registrations do not expire under this system. It is assumed you will remain with the club nominated as part of your original registration unless you undertake the regulated transfer process.

Aim

The aim of the WRU is to successfully establish accurate real-time data on all players in Wales annually, in order to develop and support every player and their chosen path throughout the game including post playing with transitioning into future roles in coaching or refereeing.

Process & Implementation Plan

The aim of the WRU will be achieved by Online Registration, between July and September ahead of the start of each new season. Players (parent or guardian of the player if the player is under 18) will have the responsibility to submit their Registration for the forthcoming season.

If a player is currently registered to a club from the previous season, that registration will remain in place allowing the player to activate their registration for the forthcoming season. Once the Online Registration has been submitted, the club will verify the player's commitment to the club.

At this point, both the personal details of the player and their playing commitment to the club will be secured, and the WRU database will be updated allowing the player to play. The club will then have the opportunity to add the players to team sheets and the audit.

Players will still have the opportunity to transfer throughout the season under the current transfer regulations. If a player has yet to play rugby for the first time or is not registered to a club they may do so via the WRU Game Locker.

What will success look like?

- A simple administrative process for the clubs to manage all members and the audit
- Accurate real-time data on all players in Wales
- Informed and appropriate support from the WRU development staff based on data provided
- A pro-active, targeted approach to providing events, support and development based on data provided

COACH ONLINE REGISTRATION

What does Coach Online Registration mean?

Each year, every coach in Wales (parent or guardian of the coach if the coach is under 18) will access the WRU Game Locker website www.wrugamelocker.wales to register to the club and their **'intent to coach'** in the forthcoming season.

Aim

The aim of the WRU is to successfully establish accurate real-time data on all coaches in Wales, in order to develop and support every coach and their chosen path throughout the game.

Process

The aim of the WRU will be achieved by Online Registration, between July and September ahead of the start of each new season. Coaches will have the responsibility to register to the club and their **'intent to coach'** for the forthcoming season. Once the registration has been submitted, the club will verify the coaches' position.

At this point, both the personal details of the coach and their coaching commitment will be secured, and the WRU database will be updated allowing the coach to coach.

What will success look like?

- A simple administrative process for clubs to manage all members and the audit
- Accurate real-time data on all coaches in Wales
- Informed and appropriate support from the WRU development staff, based on data provided
- A pro-active, targeted approach to providing events, support and development, based on data provided

REFEREE ONLINE REGISTRATION

What does Referee Online Registration mean?

Each year, every referee in Wales (parent or guardian of the referee if the referee is under 18) will access the WRU Game Locker website www.wrugamelocker.wales and register to the club and their *'intent to referee'* in the forthcoming season.

Aim

The aim of the WRU is to successfully establish accurate real-time data on all referees in Wales, in order to develop and support every referee and their chosen path throughout the game.

Process

The aim of the WRU will be achieved by Online Registration between July and September ahead of the start of each new season. Referees (parent or guardian of the referee if the referee is under 18) will have the responsibility to register to the club and their *'intent to referee'* for the forthcoming season. Once the registration has been submitted, the club will verify the position of the referee.

At this point, both the personal details of the referee and their refereeing commitment will be secured, and the WRU database will be updated allowing the referee to officiate.

What will success look like?

- A simple administrative process for the clubs to manage all members and the audit
- Accurate real-time data on all referees in Wales
- Appropriate support from WRU development staff, based on data provided
- A pro-active, targeted approach to providing events, support and development, based on data provided

FAQ'S

Does online registration effect my club registration?

PLEASE NOTE: Club player registrations do not expire under this system. It is assumed you will remain with the club nominated as part of your original registration unless you undertake the regulated transfer process that is in place.

Where do I go to register?

Register via the WRU Game Locker website:

www.wrugamelocker.wales

When I register, am I registering to the club?

If a player is currently registered to a club from the previous season, that registration will remain in place allowing the player to activate their registration for the forthcoming season. However, If a player has yet to play rugby for the first time or is not registered to a club they may do so via the WRU Game Locker.

What if I wish to transfer the player to a different club?

Online Registration is NOT a transfer process. To transfer the player you will need to adhere to the current transfer protocol set within the rules and regulations. For more information please contact your regional WRU team, contact details can be found on the next page.

Who will register players under the age of 18?

Under the age of 18 will be registered by their parent or guardian. The parent/guardian will be required to provide their contact details in order for the WRU to contact them on behalf of the player.

How soon can I play following my registration?

As soon as your/their registration is submitted and accepted by the WRU and Club Secretary you are eligible to play. However, we strongly advise that you register one week in advance of your/their first game.

Will Players, Coaches, Referees, Team Managers, First Aiders and Club Operations Managers be required to register their intent to participate each year?

Yes. Online Registration is an annual process.

As a club secretary are we/I able to edit an individuals data?

Very limited access to data and the editing of data will be provided to club officials as Online Registration is designed to place the responsibility of an individuals details with the parent/guardian or individual.

How will the data collected be used by the WRU?

Please refer to the WRU GDPR guide.

For any queries relating to Online Registration please contact the WRU Online Registration team:

mywru@wru.wales

CONTACTS

For help with Online Registration please email:

mywru@wru.wales

For all other enquiries please contact your WRU Regional Team:



Cardiff Rugby

Michael Connor
t: 07557 575193
e: mconnor@wru.wales



Dragons

Adrian Evans
t: 07584 488280
e: aevans@wru.wales



Ospreys

Gethin Robinson
t: 07795 854711
e: grobinson@wru.wales



RGC

David Higgs
t: 07584 488295
e: dhiggs@wru.wales



Scarlets

David Arthur
t: 07740 612791
e: darthur@wru.wales

For IT support please contact the WRU Online Registration Team:

WRU Game Locker and MyWRU

e: mywru@wru.wales

For Safeguarding support please contact the WRU Integrity Team:

Safeguarding & DBS

e: integrity@wru.wales



THIS IS OUR GAME
THIS IS WELSH RUGBY
